

# Desk/1600

Clever consumer-facing PINPad for a seamless self-checkout at counter

- ▶ Speed up the payment for Desk/series terminals
- ▶ Manage customer interface for any type of payment at the latest standards
- ▶ Integrate with any counter space thanks to a compact and nimble design



ingenico

Desk/1600 covers all payment methods and focus on contactless validation. Nimble in design, Desk/1600 takes up a limited space on a potentially busy countertop, resist to intensive sanitization and tapping by contactless cards and NFC smartphones.

#### Optimized checkout time

Payment validation is better when synchronised with the customer and however they want to pay. Equipped with a clear contactless zone, large keypad and an advanced consumer display, the Desk/1600 enhances usability and accelerates the checkout.

#### Designed for a limited space

The compact Desk/1600 fits easily on any counter, with options for either a mounted or unmounted terminal to suit the available desktop space.

#### Highest security

The Desk/1600 is certified and fully compliant with the latest global and local PCI regulations to ensure long-term payment security compliance – protecting customers' data for years to come.

#### Fast and unified integration

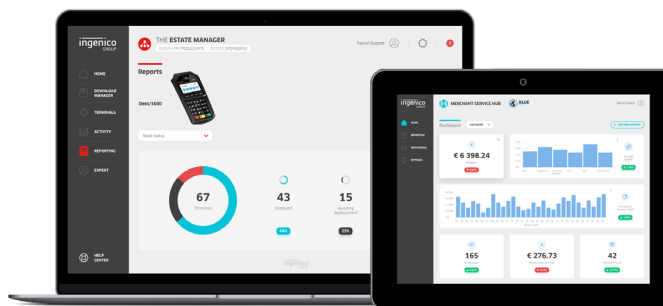
With plug-and-play installation and USB connection, the Desk/1600 connects to any Desk/series device, offering a speedy and unified solution.



#### Compatible with Ingenico's suite of services

The Desk/1600 works in unison with Ingenico's supporting service platforms, meaning merchants will have access to business services such as back office reporting and e-receipt management. Software updates and day-to-day support deliver a hassle-free experience for those using this innovative range.

The Desk/1600 is supported by our Cloud Services



DESK/1600

<b>Processor</b>	<ul style="list-style-type: none"> <li>Application &amp; Crypto processor</li> </ul>	<ul style="list-style-type: none"> <li>Cortex 32bit - 160 Mhz</li> </ul>	●
<b>Memory</b>	<ul style="list-style-type: none"> <li>Internal</li> </ul>	<ul style="list-style-type: none"> <li>700 KB RAM, 2 MB Flash</li> </ul>	●
<b>OS</b>		<ul style="list-style-type: none"> <li>Telium TETRA</li> </ul>	●
<b>Card readers</b>	<ul style="list-style-type: none"> <li>Magstripe</li> <li>Smart card</li> <li>Contactless</li> </ul>	<ul style="list-style-type: none"> <li>ISO 1/2/3, 500K lifespan</li> <li>EMV Level 1, 500K lifespan</li> <li>EMV Level 1, v.3</li> </ul>	● ● ●
<b>Display</b>	<ul style="list-style-type: none"> <li>Colour</li> </ul>	<ul style="list-style-type: none"> <li>2.8" display, QVGA (320x240 pixels) - Glass lens</li> </ul>	●
<b>Keypad</b>		<ul style="list-style-type: none"> <li>15 keys, raised marking, 4 function keys</li> </ul>	●
<b>Audio</b>	<ul style="list-style-type: none"> <li>Buzzer</li> </ul>		●
<b>Terminal connections</b>	<ul style="list-style-type: none"> <li>USB</li> </ul>	<ul style="list-style-type: none"> <li>1 USB Host</li> </ul>	●

DESK/1600

<b>Terminal size</b>		<ul style="list-style-type: none"> <li>180.2x83.2x43 mm (7.08x3.26x1.69")</li> </ul>	●
<b>Weight</b>		<ul style="list-style-type: none"> <li>221 g (7.79oz)</li> </ul>	●
<b>Environment</b>	<ul style="list-style-type: none"> <li>Operating Temperature</li> <li>Storage Temperature</li> <li>Operating Humidity</li> </ul>	<ul style="list-style-type: none"> <li>0°C to +40°C (32°F to 104°F)</li> <li>-20°C to +55°C (-4°F to 131°F)</li> <li>85% non-condensing at +40°C (104°F)</li> </ul>	● ● ●
<b>Accessory</b>	<ul style="list-style-type: none"> <li>Privacy shield</li> </ul>	<ul style="list-style-type: none"> <li>Factory mounted</li> <li>Field upgradable</li> </ul>	Option Option
<b>Security</b>		<ul style="list-style-type: none"> <li>PCI PTS 6.x online &amp; offline certified</li> </ul>	●



www.ingenico.com

ingenico