

# Lane/8000

Secure, sleek and smart  
for an enhanced checkout experience

- ▶ Engage consumers with a large multimedia touchscreen and user-friendly HTML5 interface
- ▶ Quick and easy payment options to improve checkouts
- ▶ Integrate simply into any environment
- ▶ Help reduce PCI-DSS audit scope with seamless semi-integrated configuration options



ingenico

Designed for speed and efficiency, the Lane/8000 creates new points of consumer engagement that improve brand loyalty and drive additional sales.

### Future-proof payment security

PCI PTS 5.x certified solution, the Lane/8000 is natively designed to meet local regulations and ensure long-term compliance. It uses the latest cryptographic schemes with future-proofed encryption, while additional anti-theft systems, such as cable removal detection and Kensington locks, offer further protection.

### Support for all payment options

The Lane/8000 supports EMV chip & PIN, EMV chip & sign, and magstripe transactions, as well as the broadest range of contactless NFC, mobile wallet, and alternative payment methods. Each method is available by selection and highlighted via illumination for easy and convenient use.

### Consumer-friendly design enabling greater customer engagement

An intuitive, interactive device, the Lane/8000 transforms the point of sale into a point of engagement. Using HTML5, it offers the same user experience, touchscreen capabilities, and user-friendly interface as a tablet computer. Multimedia support is also available along with Bluetooth and barcode scanning.



### Lower total cost of ownership

Automatic and remote diagnostics, as well as preventive maintenance capabilities, reduce the total cost of ownership and protect your hardware investment. Support for semi-integrated configurations simplifies compliance with the latest PCI DSS security standards while minimizing your compliance costs.



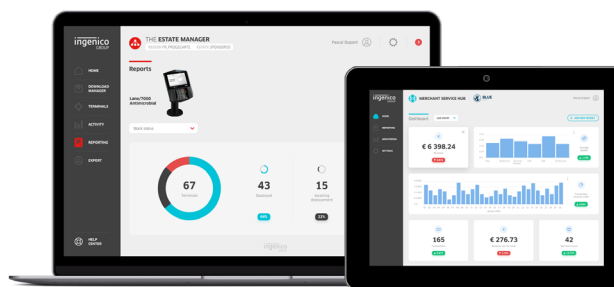
### Industry-proven and reliable technology

Backed by 40 years of development experience, the Telium TETRA operating system is the perfect combination of payment expertise and web-based design creativity. It offers powerful security mechanisms to protect transaction data while enabling the rich content of HTML5 web-based applications.

### Compatible with Ingenico's suite of services

Keeping the solutions connected, the Lane/8000 works in unison with Ingenico's supporting service platforms, meaning merchants will have access to business services such as back office reporting and e-receipt management. Software updates and day-to-day support deliver a hassle-free experience.

Lane/8000 is supported by our Cloud Services



|                       |  |   | LANE/<br>8000         |
|-----------------------|--|---|-----------------------|
| <b>Processor</b>      | • Crypto & Applications Processor                        | • Cortex A5   | ●                     |
| <b>Memory</b>         | • Internal<br>• External                                 | • 512 MB Flash, 512 MB RAM<br>• Micro SD up to 32 GB  | ●<br>Option           |
| <b>OS</b>             |  | • Telium TETRA HTML5  | ●                     |
| <b>SAM</b>            |  | • 3   | Option                |
| <b>Card Reader(s)</b> | • Magstripe (dual head)<br>• Smart Card<br>• Contactless | • ISO1/2/3,<br>500K reads lifespan<br>• EMV Level 1,<br>500K reads lifespan<br>• EMV Level 1 compliant                                    | ●<br>●<br>●           |
| <b>Display</b>        | • Colour   | • 5" backlight WVGA, TN* display (800x480)<br>• 5" backlight WVGA, AWVA** display (800x480)<br>• 7" backlight WVGA, TN* display (800x480) | ●<br>●                |
| <b>Touchscreen</b>    | • Capacitive   | • Finger & stylus (1000K lifespan signature)  | ●                     |
| <b>Stylus</b>         | • Passive  | • Tethered included   | ●                     |
| <b>Keypad</b>         |  | • 15 keys, raised markings, backlit   | ●                     |
| <b>Camera</b>         |  | • 5M pixels autofocus (QR code library embedded)  | Option                |
| <b>Audio</b>          | • Buzzer<br>• Audio Jack<br>• Speaker                    | • Stereo<br>• Mono  | ●<br>Option<br>Option |

\* TN: Twisted Nematics

\*\*AWVA: Angle Wide Vertical Aligned to provide a better viewing angle, better color depth and no grey inversion phenomenon

|                              |   |   | LANE/<br>8000                             |
|------------------------------|---|---|---|
| <b>Terminal Connectivity</b> | • Wired<br><br>• Wireless   | • Ethernet 10/100 base T<br>• Ethernet switch<br>• WIFI and Bluetooth   | ●<br>Option<br>Option                     |
| <b>Terminal Connections</b>  | • USB<br><br>• Serial<br>• Powered USB<br>• Powered RS 232<br>• Powered Ethernet<br><br>• External Power Supply | • USB Host<br>• 2nd USB Host<br>• USB Slave<br>• 1 RS232<br>• 12 V (USB retail)<br>• 12 V<br>• POE Compliant with 802.3af (1) | ●<br>Option<br>●<br>●<br>●<br>●<br>Option |
| <b>Stand Mounting</b>        |   | • Universal Payment Mount   | Option                                    |
| <b>Terminal Size</b>         |   | • 180 x 152 x 35,2 mm (7.44" x 5.99" x 1.38")<br>• 200 x 205,5 x 44 mm (7.87" x 8.07" x 1.73")                                | ●   |
| <b>Weight</b>                |   | • 583g (20,56oz)<br>• 796g (28,08oz)  | ●   |
| <b>Environment</b>           | • Operating temperature<br>• Storage temperature<br>• Relative humidity   | • 0 to +50°C (32°F to 122°F)<br>• -20 to +70°C (-4°F to 131°F)<br>• 85% HR at +40°C (104°F)                                   | ●<br>●<br>●                               |
| <b>Accessories</b>           | • Privacy shield  | • PCI compliant   | ●   |
| <b>Security</b>              | • PCI PTS<br>• Anti-removal<br>• Anti-theft   | • PCI PTS 5.x certified<br>• Active connector removal<br>• Kensington lock receptacles<br>• Secure mounts available           | ●<br>●<br>●<br>Option                     |



www.ingenico.com

ingenico