

# Move/3500

Accept any type of payment,  
while doing business on-the-go

- Leverage Telium applications on the next-generation payment terminal
- Make NFC payment a seamless consumer experience
- Bring mobile payment to your POS with the most connected terminal



ingenico

The Move/3500 offers a seamless payment experience while on-the-go. As a best-in-class, pocket-sized portable terminal it complies with future security standards.

### Highest security

The Move/3500 is PCI-PTS 5.x certified. Its TELIUM Tetra OS uses the latest cryptographic schemes with future-proof key length.

### All payment options

The Move/3500 enables NFC couponing and wallet use cases, in addition to EMV Chip & PIN, swipe and contactless.

### User-friendly and intuitive interface

Featuring a large 3.2-inch display, the Move/3500 provides a seamless payment experience.

### Designed for mobility

Designed for indoor and outdoor use, the pocket-sized Move/3500 offers extended battery life. It is the perfect business companion for merchants.

### Maximized network availability

In one single terminal, Move/3500 proposes a full spectrum wireless connectivity (with 4G, 3G, GPRS, Dual SIM, Bluetooth and WiFi), offering flexibility to merchant in the point of sale, while optimizing communication costs.

### Seamless NFC payment

The Move/3500 boosts NFC payment by offering to customers a seamless experience through a dedicated card-reader zone and faster transaction flows.



### Secure Telium TETRA OS

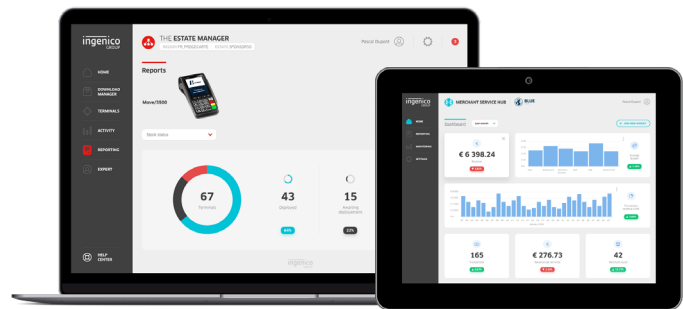
Backed by 40 years of experience and with its user-friendly interface, the Telium TETRA operating system includes the best security mechanisms embedded to protect transaction privacy and leverages Ingenico's unique portfolio of payment applications.

### Compatible with Ingenico's suite of services

Keeping the solutions connected, the Move/3500 works in unison with Ingenico's supporting service platforms, meaning merchants will have access to business services such as back office reporting and e-receipt management. Software updates and day-to-day support deliver a hassle-free experience.



The Move/3500 is supported by our Cloud Services



<b>Processor</b>	• Application & Crypto processor	• Cortex A5	•
<b>Memory</b>	• Internal • External	• 256 MB Flash, 128 MB RAM • 512 MB Flash, 128 MB RAM • MicroSD up to 32GB	• Option Option
<b>OS</b>		• Telium TETRA	•
<b>SIM</b>		• 2 SIM	Option
<b>SAM</b>		• 2 SAM • 3rd SAM	• Option
<b>Card readers</b>	• Magstripe • Smart card  • NFC/Contactless	• ISO 1/2/3, 500K lifespan • EMV Level 1, 500K lifespan • EMV Level 1 compliant	• • Option
<b>Data capture</b>	• GPS	• GPS tracking	Option
<b>Display</b>	• Colour	• 3.2" backlit, QVGA (320x240 pixels)	•
<b>Keypad</b>		• 20 keys, raised marking, backlit	•
<b>Audio</b>	• Buzzer		•

<b>Thermal Printer</b>	• Speed in lines/s • Paper roll cage	• up to 30 lines/s • 58 mm width x Ø 40 mm	• •
<b>Terminal connectivity</b>	• WAN • LAN • Multicom	• 4G and/or 3G and/or GPRS • WiFi and/or Bluetooth • WAN + LAN	Option Option Option
<b>Terminal connections</b>	• USB	• Host & Slave • Dedicated power Jack	• •
<b>Battery</b>	• Li-ion	• 2200mAh • 2900mAh	• Option
<b>Terminal size</b>		• 169x78x57 mm (6.6x3.1x2.2")	•
<b>Weight</b>	• Terminal + Battery	• 320 g (11 oz)	•
<b>Environment</b>	• Operating Temperature • Storage Temperature • Operating Humidity	• -10°C to +40°C (14°F to 104°F) • -20°C to +55°C (-4°F to 131°F) • 85% non-condensing at +40°C (104°F)	• • •
<b>Accessory</b>	• Privacy shield • Car Charger • Docking-station	• Factory Mounted  • Charger • 2 RS232 • USB Host • USB Slave • Modem • Ethernet 10/100 Base T • Bluetooth	Option Option • Option Option Option Option
<b>Security</b>		• PCI PTS 5.x & 4.x online & offline certified	•



www.ingenico.com

ingenico