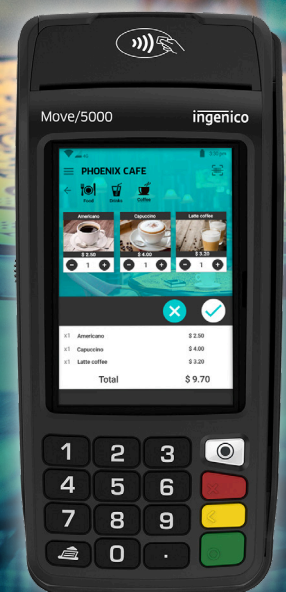


# Move/5000

The perfect business companion  
for in-door and outdoor mobile businesses

- ◉ Enhanced customer engagement on the shop floor
- ◉ Sleek design for high-end environments
- ◉ Intuitive interface for best-in-class user experience
- ◉ Never disconnect via automatic network switching



ingenico

Designed for both indoor and outdoor use, the compact Move/5000 is the perfect business companion for hospitality, high street and small merchants, creating a seamless shopping experience that's free from the checkout.

### Fast introduction with Telium TETRA OS

The Telium TETRA OS integrates with existing payment methods to ensure a seamless introduction into a business' payment environment. Merchants also have greater control over the payment experience that they're offering customers by utilising useful HTML5 applications.

### Alternative payment methods

From mobile wallets to traditional payments schemes, Move/5000 has it covered. The Move/5000 contains payment hardware such as NFC couponing, chip & PIN, swipe and sign, contactless and more to facilitate the processing of alternative payment methods - including those enabled by camera, like QR codes.

### Highest security

The Move/5000 is certified and fully compliant with the latest global and local PCI regulations. The Telium TETRA OS has been future-proofed with top-of-the-line cryptography software and Ingenico's world-class peer-to-peer encryption technology to keep data safe.

### Maximized network availability

Even on the go, those using the Move/5000 terminal will have strong connections to the internet. That's because this terminal utilises a wide range of wireless connectivity options and automatic network switching between 4G, 3G, 2G, Dual SIM, Bluetooth and WiFi - all fully optimised so that connection will always be viable.



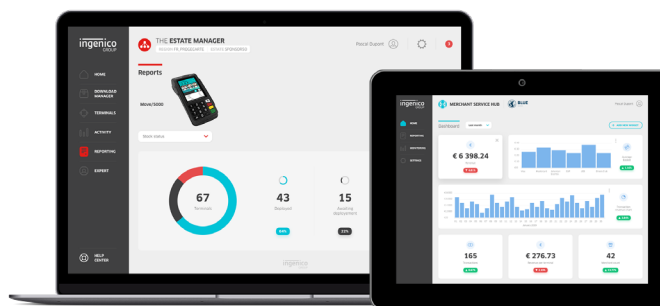
### Optimal user-experience

This terminal is dynamic by design, and its intuitive user interface - including powerful multimedia capabilities and a large 3.5 inch colour touchscreen - creates an optimal experience for customers. Its new and ultra-responsive rubber keypad improves PIN entry for customers.

### Compatible with Ingenico's suite of services

Keeping the solutions connected, the Move/5000 works in unison with Ingenico's supporting service platforms, meaning merchants will have access to business services such as back office reporting and e-receipt management. Software updates and day-to-day support deliver a hassle-free experience for those using this innovative range.

The Move/5000 is supported by our Cloud Services



<b>Processor</b>	• Application & Crypto processor	• Cortex A5	•
<b>Memory</b>	• Internal • External	• 512 MB Flash, 512 MB RAM • MicroSD up to 32GB	• •
<b>OS</b>		• Telium TETRA	•
<b>SIM</b>		• 1 SIM • 2 SIM	Option •
<b>SAM</b>		• 2 SAM • 3 SAM	• Option
<b>Card readers</b>	• Magstripe • Smart card • NFC/Contactless	• ISO 1/2/3, 500K lifespan • EMV Level 1, 500K lifespan • EMV Level 1 compliant	• • •
<b>Data capture</b>	• Positioning • Barcode reader • Camera	• GPS tracking • 1D/2D • 5M pixels autofocus	Option Option Option
<b>Display</b>	• Colour	• 3.5" backlit, HVGA (480x320 pixels)	•
<b>Touchscreen</b>	• Resistive • Capacitive		• Option
<b>Keypad</b>		• 16 keys, raised marking, backlit	•
<b>Audio</b>	• Buzzer • Speaker • Audio Jack	• Mono • Stereo	• Option Option
<b>Video</b>	• Video accelerator	• H264 codec	•

<b>Thermal Printer</b>	• Speed in lines/s • Paper roll cage	• up to 30 lines/s • 58 mm width x Ø 40 mm • 58 mm width x Ø 25 mm	• • Option
<b>Terminal connectivity</b>	• WAN • LAN • Multicom	• 4G and/or 3G with fallback • WiFi and/or Bluetooth • WAN + LAN	Option Option Option
<b>Terminal connections</b>	• USB • Power Supply	• Host & Slave • Dedicated power Jack	• •
<b>Battery</b>	• Li-ion	• 2900mAh	•
<b>Terminal size</b>	• Ø 40 mm • Ø 25 mm	• 169x78x57 mm (6.6x3.1x2.2") • 160x78x47 mm (6.3x3.1x1.9")	• •
<b>Weight</b>	• Terminal + Battery	• 320 g (11 oz)	•
<b>Environment</b>	• Operating Temperature • Storage Temperature • Operating Humidity	• -10°C to +50°C (14°F to 122°F) • -20°C to +55°C (-4°F to 131°F) • 85% non-condensing at +40°C (104°F)	• • •
<b>Accessory</b>	• Privacy shield • Car Charger • Docking-station	• Factory Mounted  • Charger • 2 RS232 • USB Host • USB Slave • Modem • Ethernet 10/100 Base T • Bluetooth	Option Option • Option Option Option Option Option Option
<b>Security</b>		• PCI PTS 5.x online & offline certified	•



www.ingenico.com

ingenico