

Move/series ATEX

Bring mobile payment in petrol station environment

- Support mobile payment in Potentially Explosive atmospheres with an ATEX-certified POS terminal
- Optimize revenue opportunities with 24/7 connectivity
- Combine portability and security for the best consumer experience



ingenico

The Move/series EX range is designed to bring an innovative payment solution and improve the consumer's experience at gas stations.

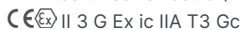
All payment options

In addition to EMV Chip & PIN, Swipe & Sign, NFC couponing and wallet use cases, the Move/series EX range boosts NFC payment by offering to customers a seamless experience through a dedicated card-reader zone and faster transaction flows.

ATEX certified

Move/series EX brings secure and easy payment in Potentially Explosive Atmospheres such as the environment close to petrol pumps.

ATEX certified for Cat 3 (Zone 2) with the label below:



User-friendly

Featuring color displays, large keypads and intuitive interfaces, Move/series EX range provides a seamless payment experience.



Designed for mobility

Designed for both indoor and outdoor uses, the pocket-sized Move/series EX range offers the perfect business companions.

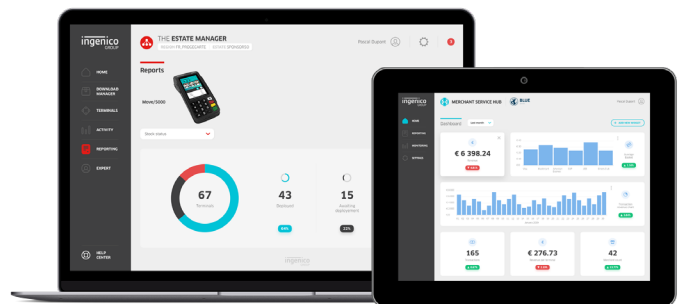
Maximized network availability

Providing full spectrum wireless connectivity (4G, 3G, GPRS, Dual SIM, Bluetooth and WiFi), the Move/series EX range offers the widest touch point flexibility while optimizing communication costs.

Compatible with Ingenico's suite of services

Keeping the solutions connected, the Move/series EX works in unison with Ingenico's supporting service platforms, meaning merchants will have access to business services such as back office reporting and e-receipt management. Software updates and day-to-day support deliver a hassle-free experience.

The Move/series ATEX is supported by our Cloud Services



			MOVE/ 5000 EX	MOVE/ 3500 EX	MOVE/ 2500 EX
Processor	• Application & Crypto processor	• Cortex A5	•	•	•
Memory	• Internal	• 256 MB Flash, 128 MB RAM	N/A	•	•
	• External	• 512 MB Flash, 128 MB RAM • 512 MB Flash, 512 MB RAM • MicroSD up to 32GB	N/A	N/A	Option
OS		• Telium TETRA	•	•	•
SIM		• 2 SIM	Option	Option	Option
SAM		• 2 SAM • 3, 4 or 5 SAM	•	•	•
Card readers	• Magstripe • Smart card • Contactless	• ISO 1/2/3, 500K lifespan • EMV Level 1, 500K lifespan • EMV Level 1 compliant	•	•	•
Display	• Colour	• 2.4" backlit, QVGA (320x240 pixels) • 3.2" backlit, QVGA (480x320 pixels) • 3.5" backlit, HVGA (480x320 pixels)	N/A	N/A	•
Touchscreen	• Resistive	• 100K lifespan signature	•	N/A	N/A
Keypad		• 16 keys, raised marking, backlit • 20 keys, raised marking, backlit	•	N/A	•
Audio	• Buzzer • Speaker	• Mono	•	•	•
Video	• Video accelerator	• H264 codec	•	N/A	N/A

			MOVE/ 5000 EX	MOVE/ 3500 EX	MOVE/ 2500 EX
Thermal Printer	• Speed in lines/s • Paper roll cage	• up to 24 lines/s • up to 30 lines/s • 58 mm width x Ø 40 mm • 58 mm width x Ø 25 mm	N/A	N/A	•
Terminal connectivity	• WAN • LAN • Multicom	• 4G and/or 3G and GPRS • WiFi and/or Bluetooth • WAN + LAN	Option	Option	Option
Terminal connections	• USB • Power Supply	• Host & Slave • Dedicated power Jack	•	•	•
Battery	• Li-ion	• 2900mAh • 2200mAh	•	•	•
Terminal size		• 169 x 78 x 57 mm (6.6x3.1x2.2") • 160 x 81 x 58 mm (6.3x3.2x2.7")	•	•	N/A
Weight	• Terminal with battery and Holster	• 454 g (16 oz) • 439 g (15,5 oz) • 418 g (14,8 oz)	•	N/A	N/A
Environment	• Operating Temperature • Storage Temperature • Operating Humidity	• 0°C to +50°C (32°F to 122°F) • -20°C to +55°C (-4°F to 131°F) • 85% non-condensing at +40°C (104°F)	•	•	•
Accessory	• Stylus kit		Option	N/A	N/A
Security		• PCI PTS 5.x online & offline certified	•	•	•



www.ingenico.com

ingenico