

ingenico

MOBY/6500

Reinvent the mobile PIN pad
for micro-merchants



- Modern, compact and user-friendly mobile Point Of Sale (mPOS)
- Acceptance of all card-based payments, including EMV chip & PIN, magstripe and NFC/contactless
- Best in class Total Cost of Ownership
- White labelling options for custom device branding

Moby/6500 aims at breaking the barriers to cashless acceptance for micro-merchants.

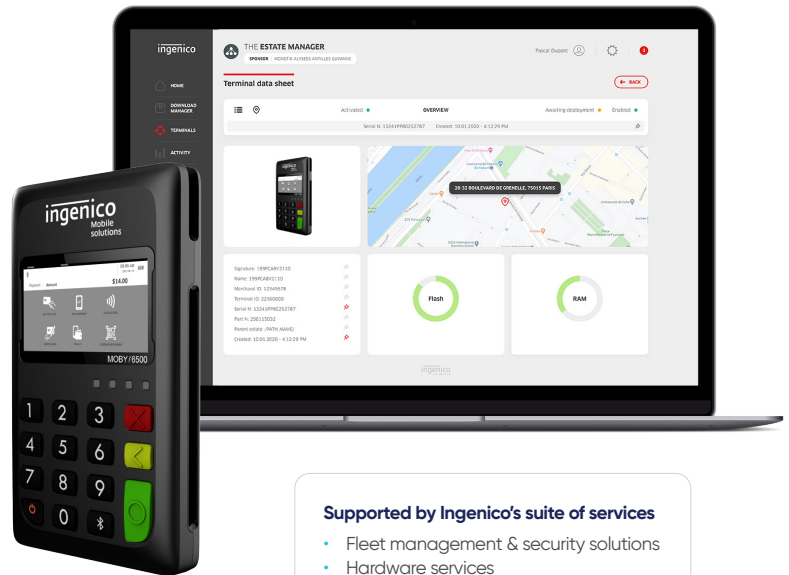
Multiple alternative payment methods supported

- EMV Chip & PIN, contactless, magstripe

Optimised TCO creates the perfect balance between value and price for micro-merchants

Best in class compactness and a weight below 90 grams to easily carry in your pocket all day

Easy integration, compatible with over 500 iOS, Android and Windows smartphones and tablets via Bluetooth



Supported by Ingenic's suite of services

- Fleet management & security solutions
- Hardware services
- Professional services

Specifications

OS	<ul style="list-style-type: none"> • Android • iOS • Windows 		<ul style="list-style-type: none"> ✓ ✓ ✓
Processor	<ul style="list-style-type: none"> • Application processor 	<ul style="list-style-type: none"> • Cortex-M4 150 MHz 	<ul style="list-style-type: none"> ✓
Card readers	<ul style="list-style-type: none"> • Magstripe card reader • Smart card reader • NFC/contactless 	<ul style="list-style-type: none"> • Support ISO 1/2 track data • EMV Contactless Chip reader • NFC reader with 4 LEDs 	<ul style="list-style-type: none"> Option ✓ ✓
Display	<ul style="list-style-type: none"> • 1.8" FSTN display 	<ul style="list-style-type: none"> • 128 x 64 Black & White 	<ul style="list-style-type: none"> ✓
Certifications & Security		<ul style="list-style-type: none"> • PCI-PTS 5.x • FCC, CE • WEE, Anatel • Abecs • EMV L1 & L2 Contactless, Mastercard Contactless 3.1, Visa payWave 2.2, Amex Express Pay 3.1, Discover D-PAS 1.0, Pure 	<ul style="list-style-type: none"> ✓ ✓ ✓ ✓ ✓

Encryption		<ul style="list-style-type: none"> • TDES-DUKPT, RSA or On-Guard DATA key • TR39/PCI PIN 2.0 DATA & PIN certified key management 	<ul style="list-style-type: none"> ✓ ✓
Power Supply	<ul style="list-style-type: none"> • USB 	<ul style="list-style-type: none"> • USB Type C AB cable / PSU not provided 	<ul style="list-style-type: none"> ✓
Connections	<ul style="list-style-type: none"> • USB 	<ul style="list-style-type: none"> • USB Type C for charging & PC connection • Bluetooth 4.2 with Apple™ MFI 	<ul style="list-style-type: none"> Option
Battery	<ul style="list-style-type: none"> • Li-ion 	<ul style="list-style-type: none"> • 260mAh - Rechargeable battery • 160 mAh coin battery 	<ul style="list-style-type: none"> ✓ ✓
Size	<ul style="list-style-type: none"> • Terminal only 	<ul style="list-style-type: none"> • 99 x 56 x 14 mm (3.9 x 2.2 x 0.55") 	<ul style="list-style-type: none"> ✓
Weight	<ul style="list-style-type: none"> • Terminal + battery 	<ul style="list-style-type: none"> • 78 grams (2,75 oz) 	<ul style="list-style-type: none"> ✓
Lifetime		<ul style="list-style-type: none"> • Up to 100k on magstripe reader & smart card reader • 3 years / 500 cycles for battery 	<ul style="list-style-type: none"> ✓ ✓

