

The Estate Manager

Leverage the full potential of your estate to support merchant success.



Never lose track of your terminal thanks to our geofencing technology

Keep devices secure and updated for business-critical transactions with our next-generation Mobile Device Management

Deploy new services with a range of new downloadable business applications

Optimize business decisions and take control of your TCO

Today's estate management is becoming more and more complex as acceptance points proliferate and regulatory pressure intensifies. That's where the Estate Manager can help. It offers a flexible and versatile solution to help you manage in real-time a diverse range of payment terminals and security protocols, simply and efficiently.

The Estate Manager helps you maintain full control of your estate on a daily basis, enabling you to monitor and manage the configuration and behavior of all terminals in your estate at all times.

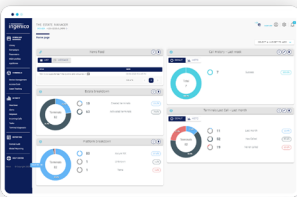
Looking to create new revenue streams? The Estate Manager allows you to offer services that enhance customer engagement, while controlling your estate management costs.

Be in control of your estate to fully manage the terminal's life cycle and optimize your Total Cost of Ownership (TCO)



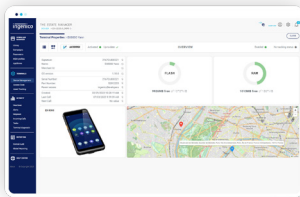
1. MANAGE AND SECURE

Make sure your terminals always up to date with the latest software applications, OS releases and security keys. Change your terminal parameters whenever you need.



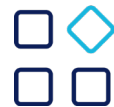
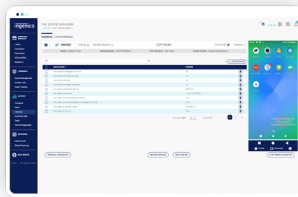
2. TRACK AND CONTROL

MDM (Mobile Device Management) and geofencing enhance your ability to track and control your fleet.



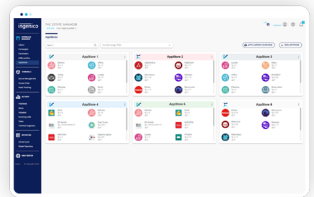
3. SUPPORT YOUR MERCHANTS

Improve your remote maintenance and better monitor the health of your estate using The Estate Manager's terminal diagnostics and remote desktop features.



4. DEPLOY NEW SERVICES

Our Appstore makes it easy for your merchants to install on their terminals the applications that you have curated for their business development.



A 2-level offer with modular functionalities:

ADVANCED FEATURES

Create additional value from your terminal with advanced services

Remote Key Injection	✓
Remote Helpdesk	✓
REST APIs for integration	✓
Heartbeat/Alerts/Real Time Sync	✓
Asset Tracking & Terminal Diagnostic	✓
App Store	✓
Support of non-ingenico terminals	Custom Project

CORE OFFER

All the essential services you need to optimise your fleet management

Software applications download	✓
Parameters management	✓
OS update	✓
Dual Factor Authentication	✓
MDM for Android	✓
Campaign based delivery	✓
GEO Location & GEO Fencing	✓



Eliminate technical complexity and variable costs by opting for SaaS or Business Process Outsourcing hosted operations and entrusting your estate management to Ingenico experts. The Estate Manager will allow you to focus on your core activities and accelerate the business of your merchants!



www.ingenico.com

ingenico